

UNEK44
AUSTRALIA
OFF ROAD ACCESSORIES

SKU: G4X4-TR-GU-ASM0



Fitting Instructions

Nissan GU Patrol 1997-2016

Tactical Roof Rack

***Australia's Best Off Road Products
Created... Not Cloned***

Contents

WHY UNEEK	3
IMPORTANT INFORMATION	4
COMPONENTS AND PARTS	5
STEP 1	6
STEP 2	6
STEP 3	6
STEP 4	7
STEP 5	7
STEP 6	7
STEP 7	8
STEP 8	8
FINISHED PRODUCT	9

Why Uneek

Australian Designed and Built

All our products are designed and manufactured right here in Australia, allowing us to have better lead times and better quality control than companies manufacturing overseas. By supporting us you're supporting to grow the Australian economy and our brand.

Uneek Styling

We do not design our bars to look the same across the vehicle range. We fully develop our own product to individually suit each vehicle. We take time in designing from scratch and then test all our bars to comply with all relevant ADRs and Australian Standards.

Lightweight Through Smart Engineering

Having a steel bar doesn't mean you have to add more weight than is required to the front of your vehicle. Our engineering practises ensure we have the right protection, designed the right way to ensure protection is at its maximum and weights at its minimum.

Proven Off Road

We take our products out and test them right here in the heart of our country in our Australian conditions so we know our products can withstand anything you throw at them.

Increased Approach Angles

Our bars are designed to give you the best advantage while off road, with increased approach angles means you can tackle those tough and steep angles better than you could with the original setup or other alternatives.

Warranty

Uneek 4x4 back itself as Australia's leading steel bull bar manufacturer. This is why we provide you with the best steel bar warranty in Australia - 5 years.

Important Information



PLEASE READ BEFORE INSTALLATION.

- This product must be installed exactly as per these instructions using only hardware supplied.
- Take a few moments to read instructions thoroughly before beginning work.
- In the event of damage to any component please contact General 4x4 Co in regards to repair/replacement of components.
- This product and its fixings must not be modified in any way unless stated in these fitting instructions.
- These instructions are correct at time of publication. General 4x4 Co cannot be held responsible for the impact of any changes subsequently made by the vehicle manufacturer.
- During installation it is the duty of the installer to check correct operation/clearances of all components.
- Installation time: 1-2 hours
- Roof Rack is rated to 150kg dynamic (driving) and 300kg static (stationary) loading evenly distributed
- Meets AS:1235:2000



EYE & EAR PROTECTION REQUIRED



DRILLING REQUIRED



TWO PERSON LIFT REQUIRED



TORQUE SETTING



CUTTING OR GRINDING REQUIRED

FASTENER TORQUE SETTINGS:

M6 – 9Nm (4lb ft)

M8 – 22Nm (16lb ft)

M10 – 44Nm (32lb ft)

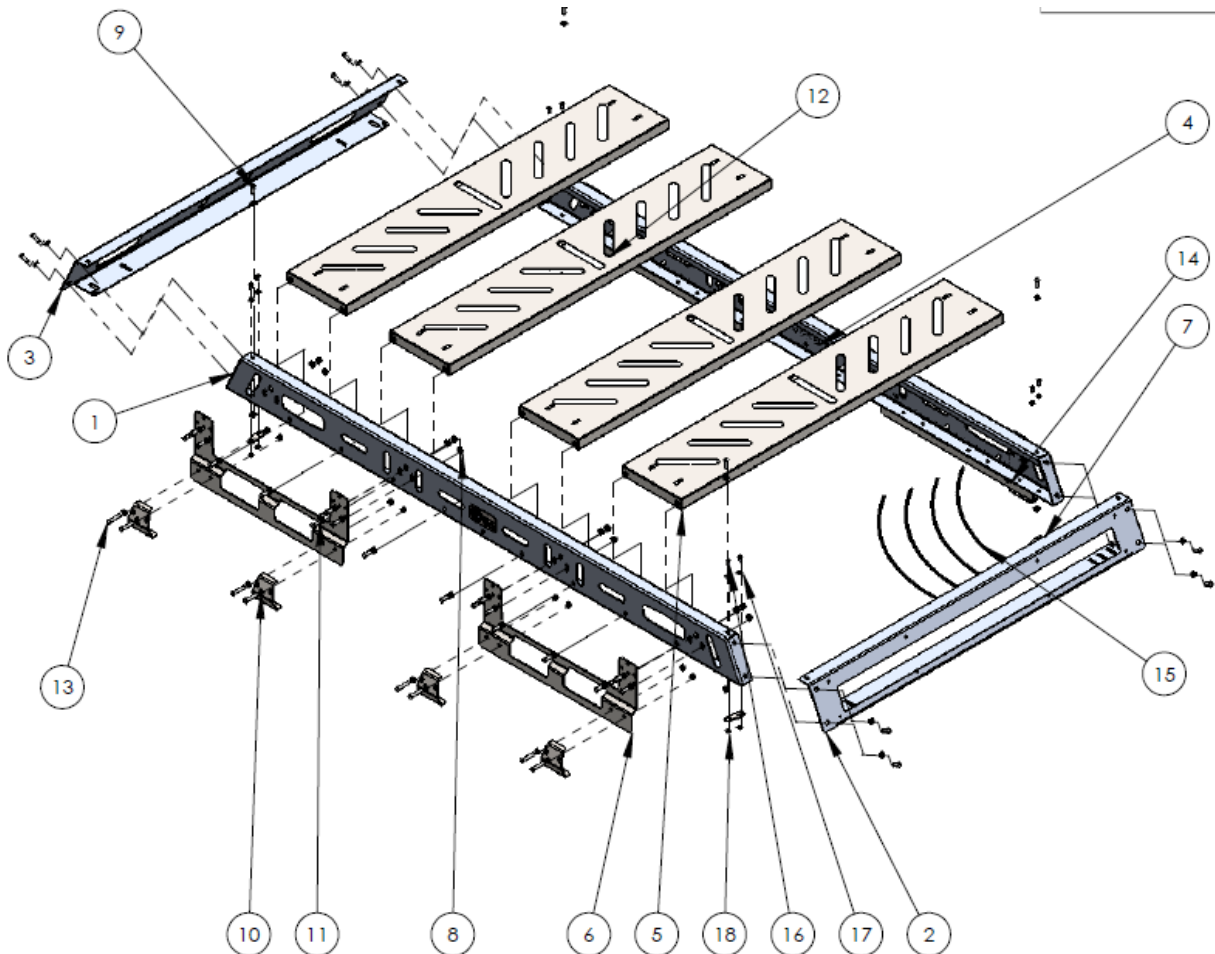
M12 – 77Nm (57lb ft)

TOOLS REQUIRED:

Basic tool kit with spanners, Allen keys (4mm and 5mm) and socket sets.

Components and parts

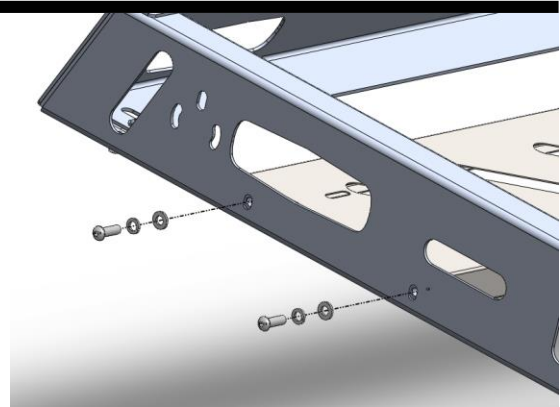
ITEM NO.	PART NUMBER	DESCRIPTION	QTY.
1	03-0321	Side Rail long 2m	2
2	03-0331	fwd panel	1
3	03-0323	Rear panel	1
4	General 4x4 logo plate	General 4x4 logo plate	2
5	G4x4-TR-ASM2	floor section	4
6	03-0491	GU Patrol side panel	4
7	03-0613	tactical rack tie in	4
8	M8 FLANGE NUT	M8 FLANGE NUT	36
9	M8X25 BHCS	M8X25 BUTTON HEAD CAP SCREW	51
10	M8 WASHER	M8 WASHER	67
11	M8 SW	M8 SPRING WASHER	15
12	03-0311	CLAMP	8
13	M8X45 BHCS	M8X45 BUTTON HEAD CAP SCREW Z/P	16
14	M8 NYLOC	NYLOC SELF LOCKING NUT, ST STL A2 ISO	16
15	PINCH WELD BLACK 570MM	PINCH WELD BLACK 570MM	4
16	M6 x 16 BHCS Z	M6 x 16 BHCS z/p	8
17	m6 washer	m6 washer	8
18	M6 FN	FLANE NUT M6	8



Step 1

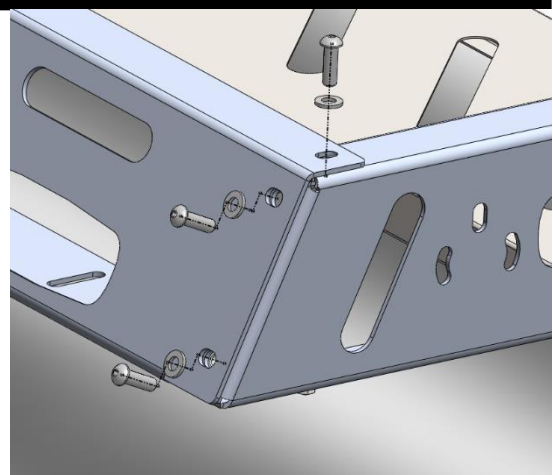
Unpack the rack and ensure you have all components.

First thing is to fit the floor pieces to the sides. We suggest using 4 floor sections but you can use less. Use M8 x 25 BHCS with spring washer and flat washer into floor section which has nutserts pre-installed for you. Leave all bolts finger tight.



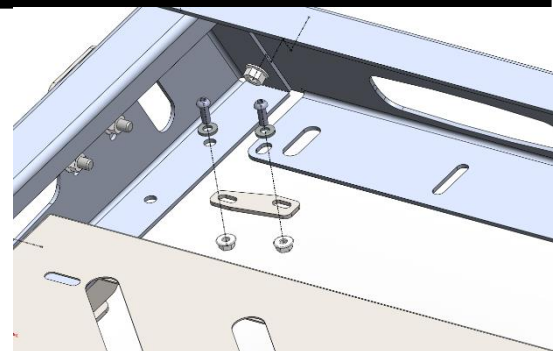
Step 2

Fit front and rear panel using M8x25 BHCS and flat washers through and use flange nuts on the inside. Leave finger tight.



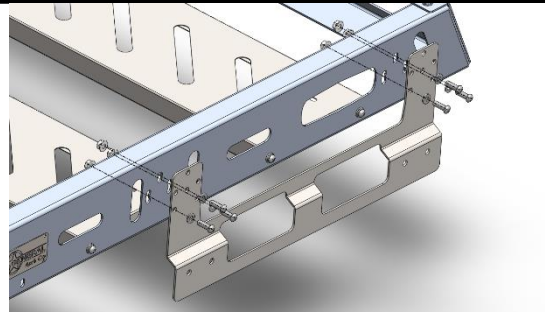
Step 3

Fit lower tie in plates to each corner with M6 x 16 BHCS flat washers and flange nuts.



Step 4

Fit side panel legs as shown with M8 x 25 BHCS, washers and flange nuts on the inside. Do this for all 4 corners. Note there are two levels on this bracket, we suggest trying the lower holes first which keeps the rack lower. Torque up all bolts.



Step 5

Line the lower edge of the panel legs with pinch weld to protect the gutter.

Lift rack on to the vehicle with the help of a friend. Once in position feed the longer M8 BHCS, flat washer through each clamp and then through a nyloc nut. Tension up enough to hold tight but don't overdo it.



Step 6

If fitting rear or side lights, bolt them on as shown otherwise skip this step.



Step 7

If fitting 40" light bar on the front panel do so now as shown, otherwise fit optional cover plate.



Step 8

Wire in any lights fitted, and your all done.



Finished Product



Revised: 14/08/2019

***Australia's Best
Off Road Products
Created... Not Cloned***

20 Gateway Drive, Carrum Downs, VIC, 3201

1800 806 952

www.uneek4x4.com.au

