

UNEK44
AUSTRALIA
OFF ROAD ACCESSORIES

SKU: TP-FB-X-ASM0



Fitting Instructions

Toyota 120 Prado 2003-2009

Urban and Winch Bumper

***Australia's Best Off Road Products
Created... Not Cloned***

Contents

WHY UNEEK	3
IMPORTANT INFORMATION	4
COMPONENTS AND PARTS	5
STEP 1	6
STEP 2	6
STEP 3	6
STEP 4	6
STEP 5	7
STEP 6	7
STEP 7	7
STEP 8	7
STEP 9	8
STEP 10	8
STEP 11	8
FINISHED PRODUCT	9

Why Uneek

Australian Designed and Built

All our products are designed and manufactured right here in Australia, allowing us to have better lead times and better quality control than companies manufacturing overseas. By supporting us you're supporting to grow the Australian economy and our brand.

Uneek Styling

We do not design our bars to look the same across the vehicle range. We fully develop our own product to individually suit each vehicle. We take time in designing from scratch and then test all our bars to comply with all relevant ADRs and Australian Standards.

Lightweight Through Smart Engineering

Having a steel bar doesn't mean you have to add more weight than is required to the front of your vehicle. Our engineering practises ensure we have the right protection, designed the right way to ensure protection is at its maximum and weights at its minimum.

Proven Off Road

We take our products out and test them right here in the heart of our country in our Australian conditions so we know our products can withstand anything you throw at them.

Increased Approach Angles

Our bars are designed to give you the best advantage while off road, with increased approach angles means you can tackle those tough and steep angles better than you could with the original setup or other alternatives.

Warranty

Uneek 4x4 back itself as Australia's leading steel bull bar manufacturer. This is why we provide you with the best steel bar warranty in Australia - 5 years.

Important Information



PLEASE READ BEFORE INSTALLATION.

- When installed in accordance with these instructions, the front protection bar does not affect the operation of the vehicles SRS airbags.
- This product must be installed exactly as per these instructions using only hardware supplied.
- Take a few moments to read instructions thoroughly before beginning work.
- In the event of damage to any bar component please contact Uneek 4x4 in regards to repair/replacement of components.
- Do not use this product for any vehicle make or model other than that specified on these instructions.
- Do not remove labels from this product.
- This product and its fixings must not be modified in any way unless stated in these fitting instructions.
- The installation of this product is recommended for trained personnel.
- These instructions are correct at time of publication. Uneek 4x4 cannot be held responsible for the impact of any changes subsequently made by the vehicle manufacturer.
- During installation it is the duty of the installer to check correct operation/clearances of all components.
- Supplied tow points are designed as tow points only. Use in a recovery operation will be at operator's risk.
- Installation time: 4 hours.
- Vehicle specific notes: A flip up license plate kit may be required. Optional Narva 90862 license plate light to be used for winch light.



EYE & EAR PROTECTION REQUIRED



DRILLING REQUIRED



TWO PERSON LIFT REQUIRED



TORQUE SETTING



CUTTING OR GRINDING REQUIRED

FASTENER TORQUE SETTINGS:

M6 – 9Nm (4lb ft)

M8 – 22Nm (16lb ft)

M10 – 44Nm (32lb ft)

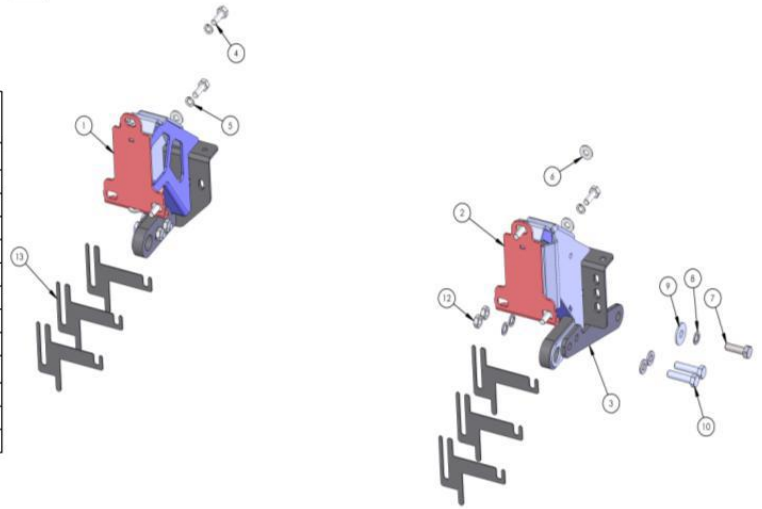
M12 – 77Nm (57lb ft)

TOOLS REQUIRED:

Basic tool kit, soldering iron or electrical in-line connectors. Male and female spade terminals.

Components and parts

ITEM NO.	PART NUMBER	DESCRIPTION	QTY.
1	03-0122R	BRACKET ASSY IMPACT FJ	1
2	03-0122L	BRACKET ASSY IMPACT FJ	1
3	04-0092	PLATE FJ TOW BRACE	2
4	M10X30	M10 X 1.5 X 30MM BOLT	6
5	M10SW	M10 SPRING WASHER	6
6	M10FWX25	M10 FLAT WASHER X 25MM WIDE	6
7	M12X40X1.25	M12 X 40 X 1.25 BOLT	2
8	M12 SW	M12 SPRING WASHER	6
9	M12 FW X 37	M12 FLAT WASHER X 37	2
10	M12X50X1.5	M12 X 50 X 1.5 BOLT	4
11	M12 FW	M12 FLAT WASHER STANDARD	4
12	M12X1.5N	M12 X 1.5 NUT	4
13	04-0262	PLATE SPACER PRADO	6



ITEM NO.	PART NUMBER	DESCRIPTION	QTY.
1	TP-FB-120U-ASM1	PRADO 120 WELDED ASSY URBAN	1
3	M8X25 BHCS	M8 BUTTON HEAD CAP SCREW	11
4	M8 FW X 22	FLAT WASHER 8MM LARGE	15
5	M8X40	M8 X 40 BOLT	2
6	CARWAY LED	FOG DRL LIGHT	2
7	AUTO 8 LED	LED INDICATOR/PARKER	2
8	M5X15 PSCREW	M5 X 15 PH SCREW	8
9	M5X10 PSCREW	M5 X 10 PH SCREW	6
10	12-0010	COVER PC FOG LIGHT	2
12	M6X20	M6 X 20 BOLT	2
13	M6 FW	M6 FLAT WASHER	2
14	M6 FN	FLANGE NUT M6	2
15	09-0057R	PANEL OUTER PRADO 120	1
16	09-0057L	PANEL OUTER PRADO 120	1
17	09-0056	PANEL ASSY PRADO CENTRE	1

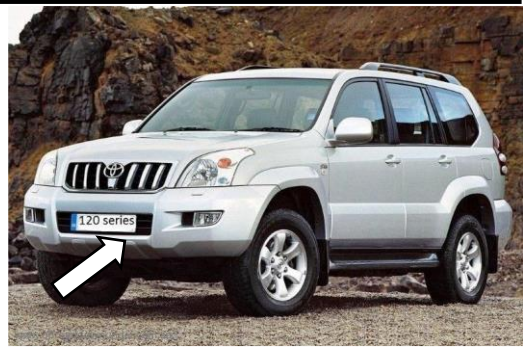


ITEM NO.	PART NUMBER	DESCRIPTION	QTY.
1	TP-FB-120C-ASM1	PRADO 120 WELDED ASSY	1
3	M8X25 BHCS	M8 BUTTON HEAD CAP SCREW	11
4	M8 FW X 22	FLAT WASHER 8MM LARGE	15
5	M8X40	M8 X 40 BOLT	2
6	CARWAY LED	FOG DRL LIGHT	2
7	AUTO 8 LED	LED INDICATOR/PARKER	2
8	M5X15 PSCREW	M5 X 15 PH SCREW	8
9	M5X10 PSCREW	M5 X 10 PH SCREW	6
10	12-0010	COVER PC FOG LIGHT	2
12	M6X20	M6 X 20 BOLT	2
13	M6 FW	M6 FLAT WASHER	2
14	M6 FN	FLANGE NUT M6	2
15	09-0057R	PANEL OUTER PRADO 120	1
16	09-0057L	PANEL OUTER PRADO 120	1
17	09-0056	PANEL ASSY PRADO CENTRE	1



Step 1

Remove grille, plastic panels under bumper and bumper. Remove any plastic or metal bumper support brackets. Remove two front bolts from lower steel bash plate and retain. Loosen other bash plate bolts only.



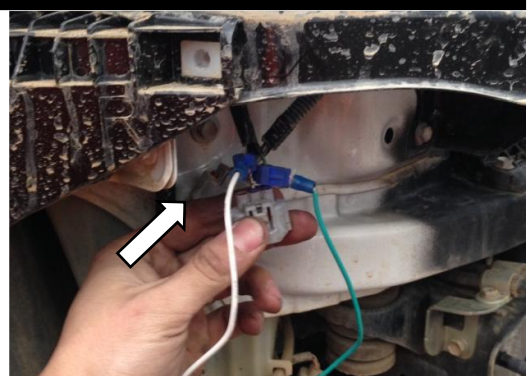
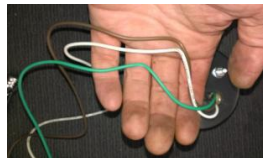
Step 2

Remove crash beam from vehicle and retain mounting nuts.



Step 3

Cut the wires on the supplied parker/indicator in half. Locate the Toyota park/indicator wires and connect these cut wires using in-line connectors (Narva 56015BL) or a soldering iron. On the LED White is earth, Brown is parker and Green is indicator.



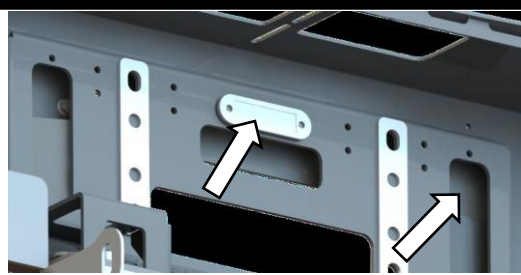
Step 4

Fit supplied fog light and park/indicator to bar. The fog lights will use the longer M5 fasteners supplied in the bar fitting kit. **DO NOT USE SUPPLIED FASTENERS IN FOG LIGHT BOX.**



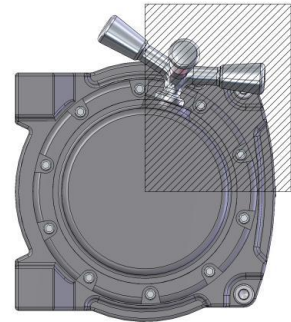
Step 5

Install optional winch light (Narva 90862) and route cable to either side of bar. Run cable through access (arrow) hole and cable tie to holes provided.



Step 6

If fitting a winch do so now. The clutch handle will need to be positioned in an area as shown.



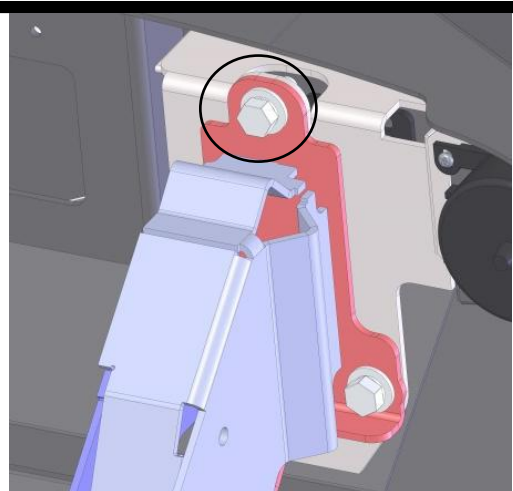
Step 7

Loosely fit impact absorbers to chassis using original nuts.



Step 8

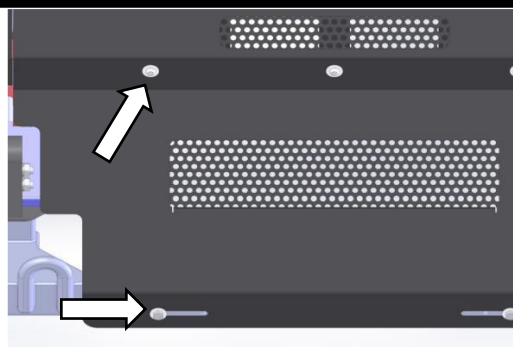
With the help of another person lift bar onto mounts and secure using M10 x 30 bolts, spring washers and flat washers. Adjust bar to a suitable position and **tighten all bolts**. Check grille clears tube when bonnet is opened. If not slide shims supplied between impacts and chassis flange.



M10-44Nm

Step 9

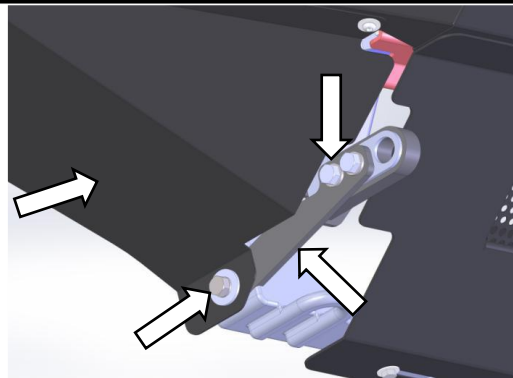
After securing winch cables etc mount centre stone guard to bar using M8 cap screws and M8 flat washers. Secure to chassis with M8 x 40 bolts and M8 flat washers. NOTE: The spacer tubes are mounted between the supplied guard and the Toyota guard. When all bolts are in tighten.



M8-22Nm

Step 10

Secure outer guards and tow point braces to bar. Loosely attach tow point brace to absorbers using M12 x 50 bolts, M12 spring washers, M12 flat washers and M12 nuts. Attach guards using M8 button head screws and M8 flat washers. Use M12 x 40 x 1.25 fine thread bolt, M12 spring washer and M12 flat washer to secure into chassis through stone guard. Tighten when done.



M12-77Nm M8-22Nm

Step 11

Check that all bolts are tight and clean bar. Check all lighting is working. Attach number plate.



Finished Product



Revised: 20/08/2019

***Australia's Best
Off Road Products
Created... Not Cloned***

20 Gateway Drive, Carrum Downs, VIC, 3201

1800 806 952

www.uneek4x4.com.au

